



THE RANCH AT ROCK CREEK  
*Montana*





## THE RANCH AT ROCK CREEK

---

79 CARRIAGE HOUSE LANE | PHILIPSBURG, MONTANA 59858

[www.TheRanchAtRockCreek.com](http://www.TheRanchAtRockCreek.com)

---

*For Reservations: 1-877-786-1545 | [Welcome@TheRanchAtRockCreek.com](mailto:Welcome@TheRanchAtRockCreek.com)*



41



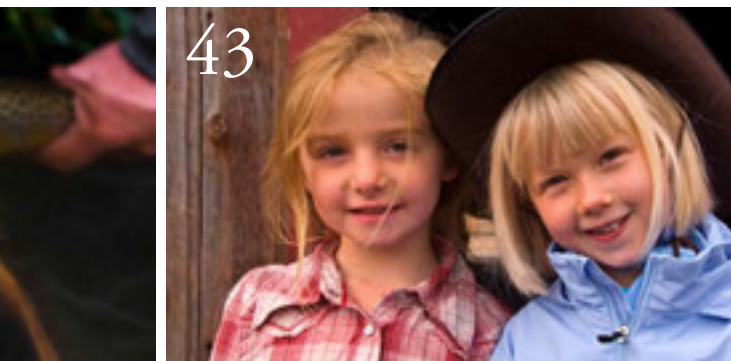
58



84



43



40



44

## CONTENTS

PP 4-11

### WHO WE ARE

*The Ranch at a Glance*

*Our History*

*Nearby Attractions*

PP 12-13

### ALL-INCLUSIVE

*Limitless Possibilities*

*What's Included*

*Seasonal Celebrations & Events*

PP 14-35

### LODGING

*Our Accommodations*

*Ranch Map*

*Granite Lodge*

*Historic Barn*

*Luxury Canvas Cabins*

*Private Homes*

PP 36-47

### ACTIVITIES

*All-Inclusive Activities*

*Horseback Riding*

*Fly Fishing*

*Target Sports*

*Children's Program*

*Granite Spa and Yoga*

*Sample Itinerary*

PP 48-51

### WINTER

*Snowbound in Montana*

*All-Inclusive Activities*

PP 52-57

### SEASONAL CELEBRATIONS

*Summer Rodeos*

*Fall Holidays*

*December Holidays*

PP 58-73

### DINING

*Montana Flavors*

*Dining Times*

*Special Dinner Events*

*Dining Venues and Event Spaces*

PP 74-79

### DESTINATION EVENTS

*Reconnect Outdoors*

*Weddings*

*Corporate Retreats*

PP 80-81

### MERCANTILE

*The Ranch Gift Store*

PP 82-89

### PLANNING YOUR TRIP

*What to Pack*

*When to Visit*

*Flights & Transportation*

*Frequently Asked Questions*

THE RANCH AT ROCK CREEK

## WHO WE ARE

---

---

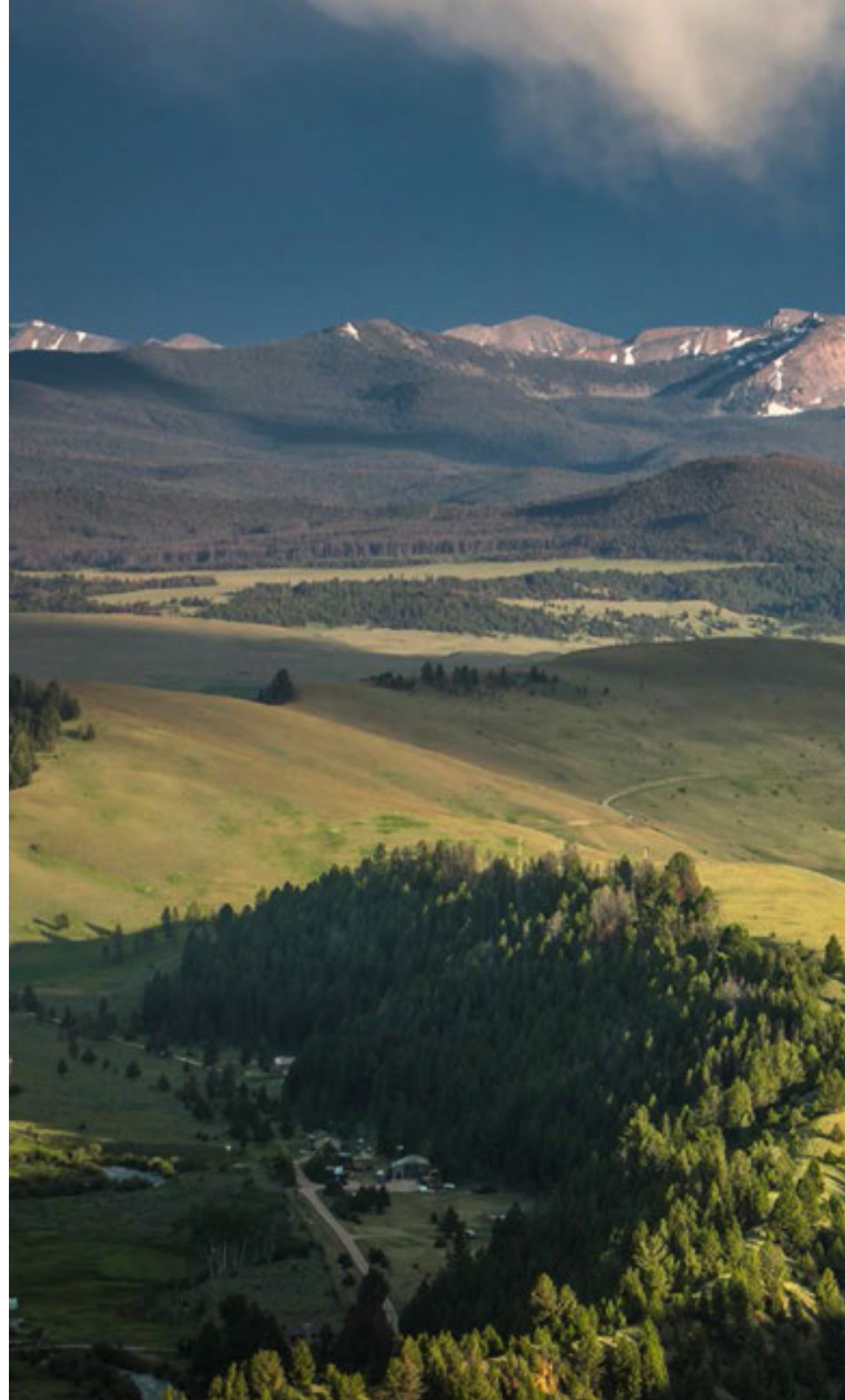
Located in the heart of Western Montana, The Ranch at Rock Creek is the world's only Forbes Travel Guide Five-Star guest ranch and the United States' only founding member of National Geographic Society's Unique Lodges of the World.

---

---

Owner Jim Manley searched the American West for twenty years to find the perfect ranch. Originally a working ranch homesteaded in the early 1900s, the property became an all-inclusive guest ranch in 2010. As a Relais & Chateaux property, we've spent the last five years

expanding the frontiers of luxury travel with our one-of-a-kind accommodations, extensive amenities, inventive cuisine and access to over twenty guided outdoor activities on 6,600 acres of mountains, meadows, forests, ponds and a Blue Ribbon freestone trout stream.



## GEOLOGICAL HISTORY

*The Sapphire, John Long and Pintler Mountains that surround The Ranch were created from tectonic activity approximately 40 to 70 million years ago. The majestic peaks and valleys of the landscape were carved out by Glacial Lake Missoula during the last ice age.*



## THE RANCH AT A GLANCE

OPENED	<i>2010</i>
ELEVATION	<i>5,200 Feet Above Sea Level</i>
ACREAGE	<i>6,600 Acres</i>
CAPACITY	<i>125 Guests</i>
LOCATION	<i>Philipsburg, Montana</i>
OPEN	<i>Year Round:</i> <i>Summer-Season</i> <i>Mid-Seasons: Fall &amp; Spring</i> <i>Winter-Season</i>
LODGINGS	<i>9 Granite Lodge Rooms</i> <i>3 Historic Barn Suites</i> <i>10 Luxury Canvas Cabins</i> <i>7 Private Homes</i>





## HISTORY OF THE RANCH

---

Granite County and its county seat, Philipsburg, came to life during the silver mining boom of the late 1800s.

The Ranch originally began as a mining claim during the boom. Philipsburg's Hope Mill was Montana's first silver mill, and the nearby Granite Mill was the state's largest silver producer. Miners first discovered sapphires in the Rock Creek drainage in 1892.

Utah cattle baron Fred Burr introduced cattle ranching to the Flint Creek Valley in the 1850s—a pursuit persevered to the present day. In the late 1800s, W.W. Shaffer and P.W. White homesteaded the land that would become The Ranch. Throughout the decades, it has operated continuously as a working cattle ranch. The original 19th-century barn and several other structures are still standing. The Historic Barn has been remodeled into three rustic but elegant accommodations.

In the 1940s, The Ranch was purchased by E.S. LeGrow. He hired well-known horse trainer, Grover Bowles as The Ranch's

manager. When Grover died, his wife, Hazel, and daughter, Sara Jane, took up the reins running The Ranch. Sara Jane's Cottage is named after this enterprising woman.

Subsequent owners include a former member of the Roosevelt administration, named Hobson, rodeo cowboy Buckles Standinger, military officer Paul Burdette, Donna and Dean Strand and Max Watson.

The current owner, Jim Manley, spent 20 years looking for the perfect ranch, following his childhood love of the West. Manley searched for specific qualities in a ranch, including a river running through the property, a nearby ski hill and an area that did not have poisonous snakes or grizzly bears.

In 2007, his quest for the perfect ranch was successfully realized. After several years of enjoying The Ranch with friends and family, he decided to share the experience with others. By adding accommodations and restoring historic buildings, it became the luxury guest ranch it is today.

---

### PHOTO RIGHT: CHUCKWAGON SUNSET

*This mobile kitchen is a Western icon. Its compact quarters and durability suited the needs of cowboys on long cattle drives.*

*The cook of this horse-drawn restaurant was commonly referred to as 'cookie' and was often second in command to the trail boss. He was usually more than a cook, acting also as barber, dentist and banker for the outfit.*







#### RANCH FACT

*Every ranch has a registered brand they use to identify their livestock. Ranchers always know whose cattle belong to what ranch regardless of where those animals might be grazing.*

*While many brands look alike, the way the symbols are arranged determines the name of the brand. Brands are read*

*left to right, top to bottom and outside-in. This is also how the name of a brand may be pronounced.*

*The orange brand painted on this chuckwagon is written K, Lazy K, quarter circle. The quarter circle means this brand is pronounced "The Rocking K."*

#### REGIONAL ATTRACTIONS

We are located halfway between Glacier and Yellowstone National Parks, near the cities of Missoula, Butte and Helena.

The Ranch property is a short distance from the Beaverhead-Deerlodge National Forest and the Anaconda-Pintler Wilderness Area.

Discovery Ski Area is a short drive from The Ranch. We are at an elevation of 5,200 feet above sea level and a Latitude/Longitude of 46° N, 113 W.



## TOP OF THE WORLD

*This aptly named trail destination is one of our most popular look-out points and provides one of the best views of the Pintler Mountains. Miles of on-property trails lead to phenomenal places for meditation, yoga or photo opportunities. Guests may borrow a mat for sun salutations (pictured right), or schedule a private yoga session.*





ALL-INCLUSIVE RATES

# LIMITLESS POSSIBILITIES



## The all-inclusive designation is a cornerstone of our Montana travel experience at The Ranch.

Our all-inclusive rate structure ensures that visits to The Ranch at Rock Creek are memorable for their adventures and amenities, not their logistical challenges.

Unlike many guest ranches, we believe our guests' experiences must not be hampered by an à la carte

pricing structure. As the world's only Forbes Travel Guide Five-Star ranch, our property truly stands apart from other resorts and dude ranches.

At The Ranch, guests do not have to forego a trail ride to a stunning vista or a guided family fly fishing adventure due to time-consuming logistical

planning and excursion or cancellation costs. It is our pleasure to offer all gourmet meals, a robust year-round outdoor activities program, an experienced staff, expert guides and top-of-the-line gear based on the idea that our 6,600 acres will become your playground for the length of your stay.

While we do not have cancellation fees, our Rod & Gun Club staff strongly encourage pre-booking and addressing any changes to activity scheduling in advance.

This courtesy provides you with plenty of opportunities for adventures. Rates include access to our fitness center, pool and hot tub.

---

*RANCH FEE - All accommodations are subject to a 20% Ranch Fee based on the total reservation amount. The Ranch Fee includes: Montana state resort tax, staff gratuities, local, national and international phone calls, wireless internet access (Wi-Fi). In addition, snacks and beverages are on-hand and restocked in the accommodations daily.*

## FULLY INCLUDED IN OUR NIGHTLY RATES



### ACCOMMODATIONS

Nightly lodging with twice-daily housekeeping and lavish amenities. Twenty-nine unique accommodations in four different styles:

- 9 Granite Lodge Rooms
- 3 Historic Barn Suites
- 10 Luxury Canvas Cabins
- 7 Private Homes



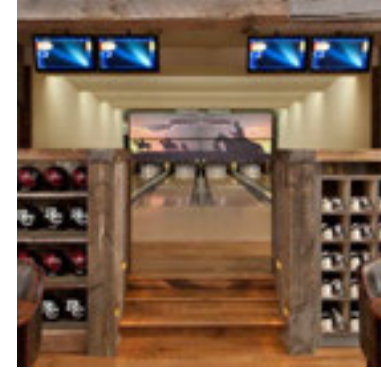
### ON-SITE ACTIVITIES

Our extensive variety of daily on-property activities is available from 9 am to 5 pm. All activities include guides and a selection of gear, such as cowboy and hiking boots, skis and fishing rods, available at the Rod & Gun Club. We encourage all guests to choose two activities per day, one in the morning and one in the afternoon.



### RANCH CUISINE

Daily breakfast, lunch, hors d'oeuvres and dinner. Unlimited premium beer, wine and spirits, as well as assorted beverages. Each accommodation has a mini-refrigerator stocked with beverages and snacks. A children's menu is also available.



### SILVER DOLLAR SALOON

Artisan cocktails, local draughts, wine and spirits are included, with the exception of the reserve list. Entertainment includes:

- Four-lane bowling alley with computerized scoring
- Private movie theatre with 14-foot HD screen
- Billiards
- Karaoke
- Shuffleboard
- Table tennis
- Card and game tables
- Darts
- Board games

### STAFF INSIGHTS

*“We specialize in creating bespoke travel experiences whether you're dining, exploring the great outdoors or simply relaxing. Accommodating our guests' preferences is paramount to our property and we strive to make each visitor feel at home.”*

— JEFFREY THOMAS  
Front Desk Manager

### SERVICES & ITEMS OFFERED AT AN ADDITIONAL COST

*Granite Spa services and treatments*

*Goods for sale at the Mercantile and the Rod & Gun Club*

*Reserve list wine and spirits*

*Yoga sessions*

*Off-property excursions (e.g., float trips)*

*Montana fishing and wing shooting licenses*

*Airport ground transfers*

*Private event production*

*Private rodeos*

ACCOMMODATIONS

# DISTINCTIVELY WESTERN



Each accommodation at The Ranch is as distinctive as it is magnificent.

When it comes to luxury in the great outdoors, we merge authentic mountain elements with premium amenities. Guests may choose to experience Montana under a canvas ceiling inside our Canvas Cabins, beneath an aspen canopy bed in the Granite Lodge, or in front of a stone fireplace in a Private Home.

PHOTO TOP: APPALOOSA LODGE ROOM

*Appaloosa offers a king canopy bed. An upper-level vantage point frames sunset views behind the Granite Lodge.*

PHOTO RIGHT: SWEET GRASS CABIN

*Sweet Grass is our largest luxury canvas cabin featuring two master bedrooms complete with clawfoot bathtub and a wood burning stove.*



THE BEST OF BOTH WORLDS

*We host the ultimate glamping adventure.  
All our canvas cabins are steps from the  
banks of Rock Creek.*





**HOME AWAY FROM HOME**

*Moose House is one of our largest private homes. With a full kitchen, stone fireplace, private yard, outdoor hot tub, three bedrooms and mountain views, this house will make you feel right at home.*



125 MAXIMUM GUEST CAPACITY

## TWENTY-NINE ACCOMMODATIONS IN FOUR DIFFERENT STYLES



### 9 GRANITE LODGE ROOMS

Each of the nine lodge rooms finds design inspiration in iconic Western themes, such as the great old railroad hotels during the turn of the century and the classic guns that helped win the West. The Lodge weaves luxury, style and authenticity together in a richly welcoming tapestry.



### 3 HISTORIC BARN SUITES

Our remodeled 19th-century barn houses three of our most unique specialty accommodations. These Historic Barn lodgings may also be reserved together to form one large accommodation for a group of 8 to 15 guests.



### 10 LUXURY CANVAS CABINS

The glamping cabins are truly the best of both worlds: a luxury guest ranch experience rooted in the deepest creekside privacy. Immerse yourself in nature without sacrificing modern comforts.



### 7 PRIVATE HOMES

Our multi-bedroom homes feature ample living space and fully domestic amenities. Each private home offers a unique floor plan for a variety of capacities and travel needs, from two-story log houses to a cozy one-bed romantic cabin.

### OUR STANDARD ACCOMMODATION AMENITIES

*Twice-daily housekeeping services*

*Stocked mini-refrigerator*

*Selection of snacks*

*Custom duvet covers*

*Frette linens*

*Bathrobe and slippers*

*Luxury bathroom amenities and toiletry kit*

*Landline phones for all calls*

*Wireless Internet access*

*iPod docking station*

*Television (excluding Canvas Cabins)*

*Air conditioning (excluding Canvas Cabins)*

*Hairdryer*

*In-room safe*

*Laundry facility access*

*Ironing board & iron (upon request for Canvas Cabins)*

*Fully-equipped kitchens (select Private Homes)*



To Top of the World,  
Archery Course,  
Skalkaho Pass,  
Anaconda,  
Butte,  
Philipsburg,  
Interstate 90



Main Entrance

Rock Creek Road



Arena

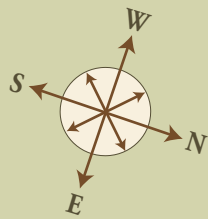


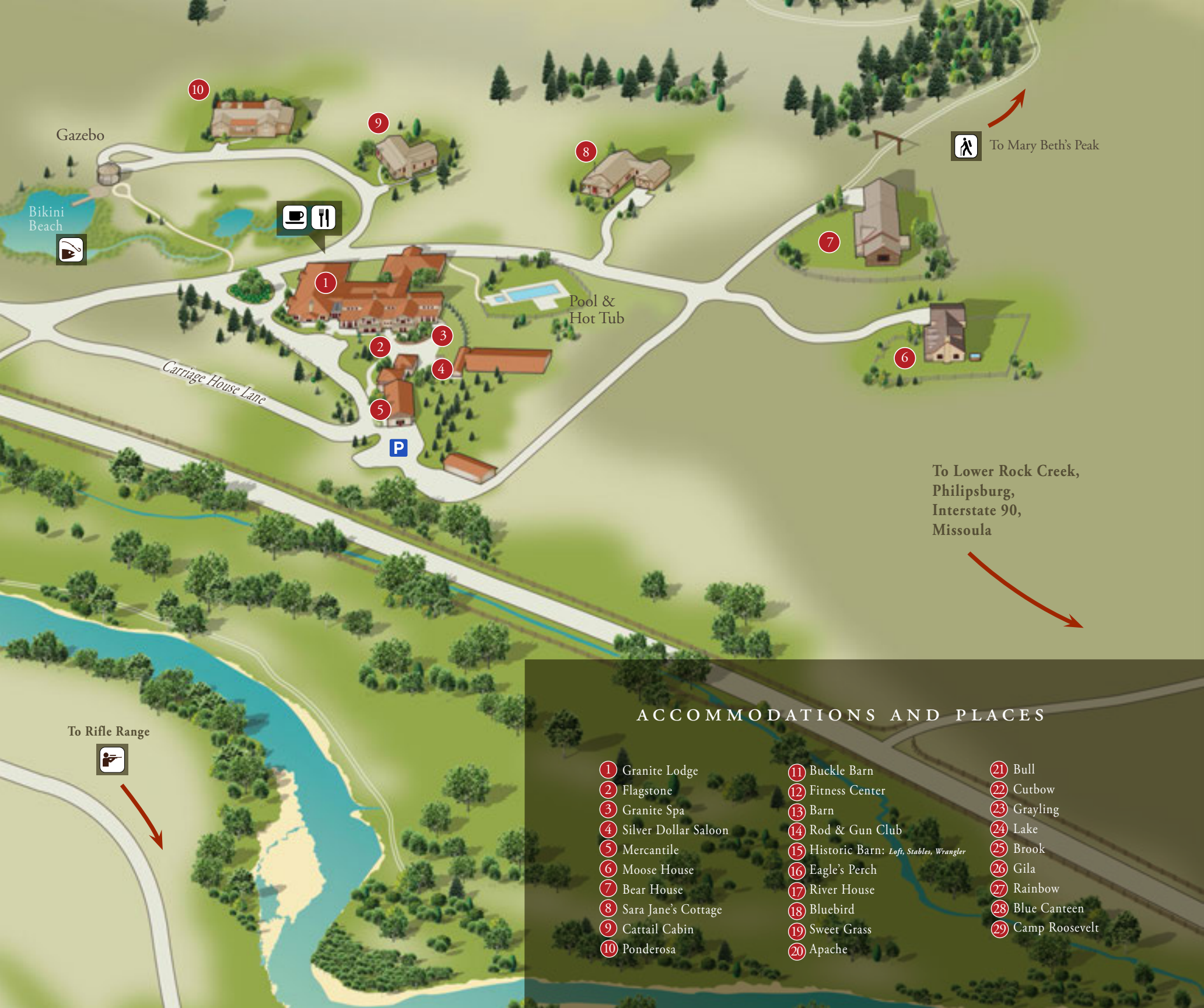
Welcome Pond



To Trapper,  
Trail System,  
Mallard Pond,  
Ropes Course,  
Shooting Ranges

Trapper Cabin





Gazebo

Bikini Beach

Carriage House Lane

Pool & Hot Tub

To Rifle Range

To Mary Beth's Peak

To Lower Rock Creek,  
Philipsburg,  
Interstate 90,  
Missoula

### ACCOMMODATIONS AND PLACES

- ① Granite Lodge
- ② Flagstone
- ③ Granite Spa
- ④ Silver Dollar Saloon
- ⑤ Mercantile
- ⑥ Moose House
- ⑦ Bear House
- ⑧ Sara Jane's Cottage
- ⑨ Cattail Cabin
- ⑩ Ponderosa
- ⑪ Buckle Barn
- ⑫ Fitness Center
- ⑬ Barn
- ⑭ Rod & Gun Club
- ⑮ Historic Barn: *Loft, Stables, Wrangler*
- ⑯ Eagle's Perch
- ⑰ River House
- ⑱ Bluebird
- ⑲ Sweet Grass
- ⑳ Apache
- ㉑ Bull
- ㉒ Cutbow
- ㉓ Grayling
- ㉔ Lake
- ㉕ Brook
- ㉖ Gila
- ㉗ Rainbow
- ㉘ Blue Canteen
- ㉙ Camp Roosevelt

## GRANITE LODGE

---

---

When you pass through our log arch, the first building you'll see is our Granite Lodge.

---

---



Appointed with custom-made furniture, woven textiles, and frontier antiques, this is the primary home base during your stay at The Ranch at Rock Creek. Meet friends and family inside the cozy Great Room before your next excursion. Step outside to the Aspen-lined courtyard and roast marshmallows over the bonfire. Follow the flagstone path to the Silver Dollar Saloon, Granite Spa and Mercantile.

### THE LODGE AT A GLANCE

- Nine rooms range in size from 315 to 397 sq. ft.
- Two rooms are located on the first floor and seven rooms are located on the second floor.
- Remington, located on the first floor, is ADA compliant.

---

#### PHOTO TOP: THE BRIDGE

*The seven upper-level rooms are connected by this spacious hall and common area. Guests staying in the lodge enjoy the small breakfast nook with a stocked refrigerator of beverages and snacks.*

#### PHOTO RIGHT: THE FLAGSTONE

*The outdoor space around the Granite Lodge, known as the Flagstone, hosts dining events during the summer season. The Granite Lodge is a hub of dining and entertainment.*















## HISTORIC BARN

---

---

Historically, a barn has always been an important investment for farming and ranching families.

---

---



Barns were a rural family's most expensive and important building. It cost more than a home and stored a ranch's wealth, in the form of livestock, equipment and feed. Our remodeled 19<sup>th</sup>-century barn houses an important piece of our Ranch history. This structure, original to the homestead, was lovingly renovated to encompass three unique accommodations that can be booked separately or in concert to house a large group. Each suite features characteristics of ranch life such as stables converted into sleeping areas.

### THE BARN AT A GLANCE

- Suites range from 386 to 928 sq. ft.
- The Historic Barn is located near Camp Roosevelt, Blue Canteen and Rod & Gun Club.
- A shared lower porch looks out over a lawn of wildflowers and native grasses.
- The three accommodations, Loft, Wrangler and Stables, can be reserved together as a three-bedroom family suite.

---

#### PHOTO LEFT: LOFT SUITE

*Once the hayloft of the original homestead's barn, Loft contrasts the original exposed-rafter ceilings with luxurious amenities. The combined bedroom and sitting area offers a king bed and queen pull-out sofa.*

#### PHOTO TOP: HISTORIC BARN & LAWN

*Once a horse barn on the working ranch, this special structure reveals historical details, such as the local brands carved into the large red doors on the shared porch.*



#### RANCH FACT

*The Historic Barn's salt box roof is proof of the Colonial American styles that traveled out west with the pioneers. The traditional red color we associate with barns came from ferrous oxide (rusted iron), an additive that helps kill mold and fungi. By the late 19th-century, chemical color in paints became available. Red was usually the least expensive and therefore the preferred choice among farmers and ranchers.*



STABLES



WRANGLER



LOFT BATHROOM





## LUXURY CANVAS CABINS

---

---

Enjoy immersion in nature without sacrificing modern comforts and privacy.

---

---



Seasoned travelers will delight in our luxury canvas cabins, created to provide guests comfort and inspiration from Montana's natural surroundings. With spacious bedrooms and living space, each cabin is individually furnished in a rustic camp style, featuring plush bedding, Western textiles and antique furniture. All canvas cabins are equipped with a full bathroom, gas stove, screened porch and a deck facing the creek.

### CANVAS CABINS AT A GLANCE

- Cabins range from 790 to 1,047 sq. ft.
- 4 Family Cabins, 4 Classic Cabins and 2 Specialty Cabins
- Trapper is our most secluded accommodation.
- Sweet Grass is our largest canvas cabin.
- All canvas cabins are located on the east side of Rock Creek and feature creek access.

---

#### PHOTOS: TRAPPER CABIN

*Trapper Cabin, situated on the banks of Rock Creek, is an innovative design, comprised of canvas, wood and stone with in-floor hydronic heat to keep it cozy year round. This peaceful getaway features a spacious bathroom with a stone-tiled shower and a kitchenette with a refrigerated wine cooler. It is the ultimate accommodation for those wanting to experience nature in comfort and privacy.*





## PRIVATE HOMES

---

---

Our custom homes capture the essence of the American West with collections of art, antiques, books and artifacts.

---

---



Our homes offer unique floor plans, multiple bedroom options and ample living space. Popular for friend getaways and multi-generational family reunions, these accommodations have been thoughtfully designed to provide both comfort and inspiration in a Big Sky Country vacation residence. They range in size from one to five bedrooms and are nestled into the surrounding landscape for privacy and wildlife viewing. All homes are a short distance from the Granite Lodge and some include a full-size kitchen and dining area for a true home-away-from-home experience.

---

**PHOTO TOP: BEAR HOUSE**

*Overlooking Rock Creek Valley and the Granite Lodge, Bear House is our largest private home with 5 bedrooms, 4 baths, a sunroom, outdoor hot tub and private lawn.*

**PHOTO RIGHT: MOUNTAIN LIVING**

*Many of our luxury homes feature spacious living and dining areas including stone fireplaces, full kitchens and multiple bedrooms such as Moose House, pictured here.*

### HOMES AT A GLANCE

- Homes range from 1,432 to 2,668 sq. ft.
- There are 7 private homes total.
- Bear House is our largest accommodation.
- Each home has unique features and bedrooms for a range of group sizes.









BLUEBIRD



CATTAIL BATHROOM



CATTAIL LIVING ROOM





#### BLUE RIBBON TROUT STREAM

*A Blue Ribbon fishery is a designation made by the U.S. Congress to identify recreational fisheries of notable high quality. There are only five states in the U.S. with waterways that have been given the official Blue Ribbon designation: Michigan, Missouri, Montana, Utah and Wisconsin. Rock Creek has one of the highest fish counts in Montana with over 1,500 trout per mile.*



#### ALL-INCLUSIVE RANCH ACTIVITIES

## WESTERN ADVENTURES

---

---

The best souvenir is a great story. With our year-round activities, we guarantee you will leave with fantastic tales, fond memories and lasting inspiration.

---

---

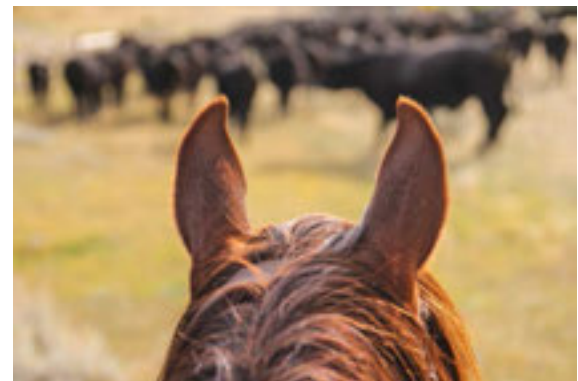
Our guides are not only experts in their field, but also outstanding teachers.

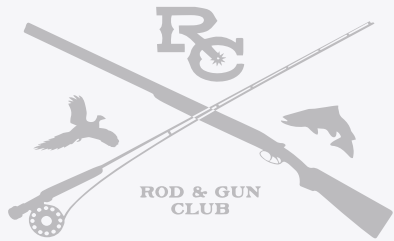
We focus on small group instruction and always strive to offer the most authentic adventure experience possible. We excel at accommodating all ability levels, even if you have never ridden a horse or cast a fly. Catering to our guests' preferences and

desires is our top priority. While we do not have cancellation fees, our Rod & Gun Club staff encourage pre-booking and addressing any changes to activity scheduling in advance. All schedules are customized to suit each guest's interests and skill levels.

**PHOTO RIGHT: COWBOY SKILLS**  
*Seeing the world from between the ears of a cowhorse is a true Montana experience. Horseback riding is one of our most popular activities.*

**PHOTO LEFT: WALK & WADE**  
*Our experts advise on how to hunt for the perfect fishing hole—so you can enjoy solitary as well as guided fly fishing. To ensure preservation of the sport, The Ranch asks that all guides and guests catch and release all trout they book while on Rock Creek and during off-site excursions.*





# ALL-INCLUSIVE ON-PROPERTY ACTIVITIES

*All necessary gear is provided at the Rod & Gun Club.  
All activities are guided and available daily between 9am-5pm.*

## HORSEBACK RIDING

*Trail Rides  
Arena Lessons  
Breakfast Rides  
Roping Lessons  
Stagecoach & Wagon Rides*

## FLY FISHING

*Walk & Wade  
Casting Lessons  
Fly Tying*

## TARGET SPORTS

*Pistol and Rifle Ranges  
Sporting Clays  
Trap & Skeet  
3-D Archery  
Firearm Maintenance*

## ROPES COURSE

*35-Foot Challenges  
Leap-of-Faith  
Three Zip Lines  
Low Ropes Team Building*

## TRAIL ADVENTURES

*Downhill Mountain Biking  
Hiking  
Geocaching  
Wildlife Jeep Tours*

## WINTER

*Snowmobiling  
Snowcat Tours  
Sleigh Rides and Sledding  
Ice Skating and Hockey  
Snowshoeing  
Cross-Country Skiing*

## LITTLE GRIZZLIES

*Rivers & Ponds  
Cowboys & Horses  
Plants & Rocks  
Arts & Crafts  
Ranch Heritage  
New Sports*

## LEISURE ACTIVITIES

*Outdoor Swimming Pool  
Four Lane Bowling  
Billiards  
Shuffleboard  
Movie Theatre  
Karaoke  
Wildlife Viewing  
Fitness Center*

---

## OFF-RANCH EXCURSIONS OFFERED AT AN ADDITIONAL PRICE

### HISTORIC MONTANA

*Ghost Town Tours  
Sapphire Mining  
Philipsburg Town Tour*

### HELI-ADVENTURES

*Backcountry Fishing  
Helicopter Tours of Yellowstone  
& Glacier National Parks  
Backcountry Hiking*

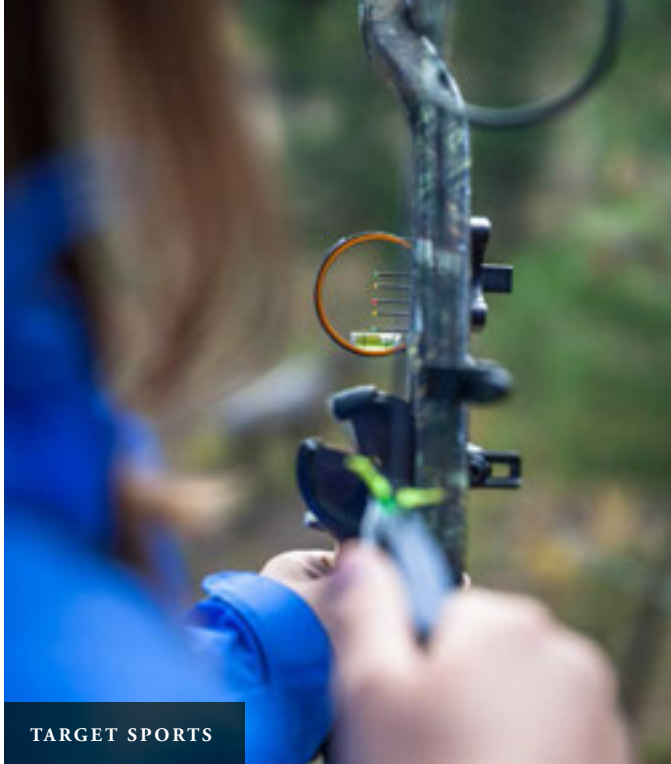
### SCENIC SPORTS

*Fishing Float Trips  
Downhill Skiing  
Scenic Raft Trips  
Hot Air Balloon Rides  
Kayaking  
ATV Tours  
Golf*

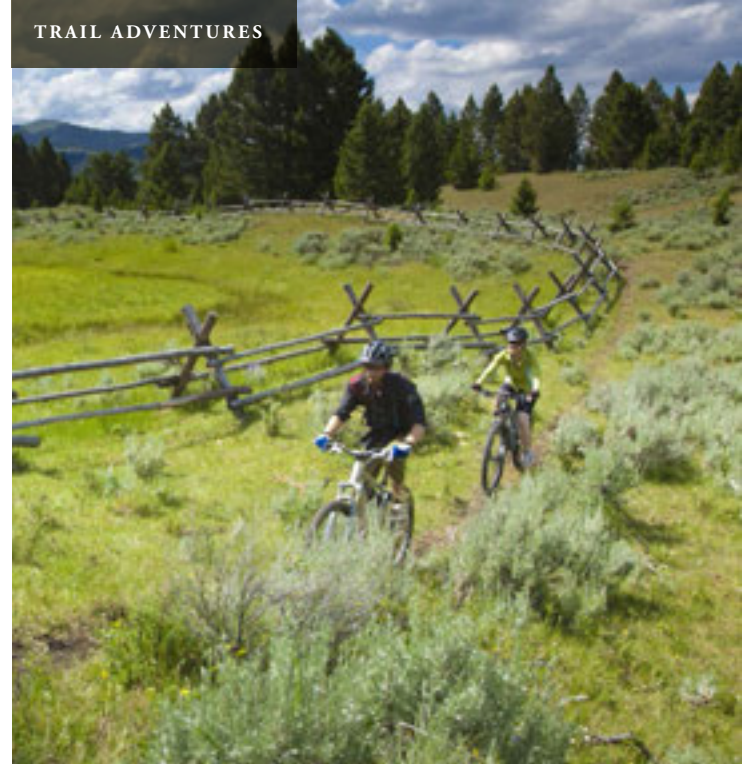




ROPES COURSE



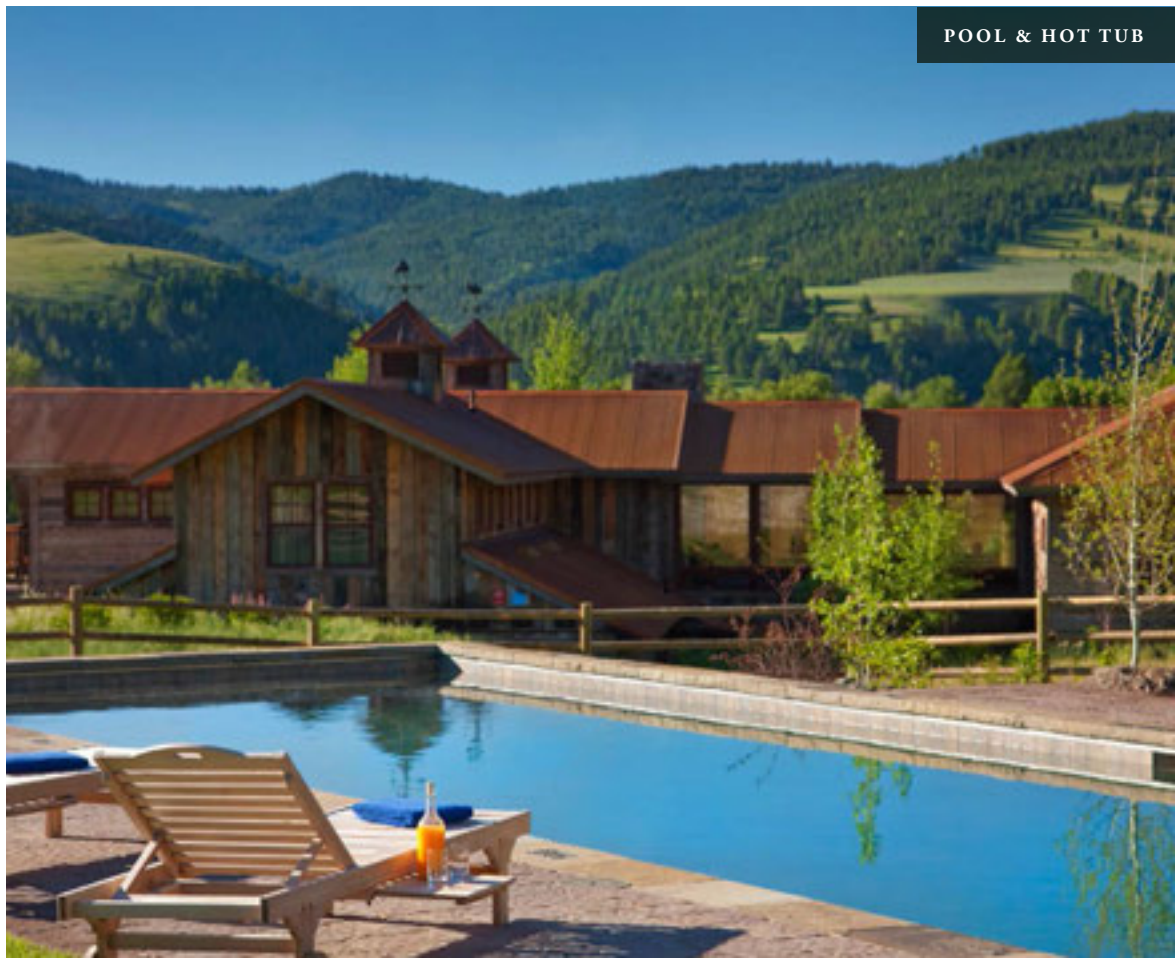
TARGET SPORTS



TRAIL ADVENTURES



HELI-FISHING



POOL & HOT TUB





## HORSEBACK RIDING

TRAIL RIDES / HORSEMANSHIP / LESSONS / BREAKFAST RIDES

Montana is made for horses and The Ranch at Rock Creek is made for riders. Wide-open skies, sagebrush hillsides and snow-capped peaks are best experienced on horseback.

Part of the experience of our Forbes Travel Guide Five-Star guest ranch is having everything for an exceptional horseback riding vacation at your fingertips. Our Rod & Gun Club fits guests with hats, boots and riding

helmets as needed. Our program is highly customizable for each guest, with wranglers at the ready to guide you through this quintessential ranch experience.

The Ranch operates in the spirit of play, where travelers immerse themselves in the riding culture of Western Montana, rather than seeing it through the slats on a corral.



### PROGRAM HIGHLIGHTS

- **General:** Horses selected based on skill level, safety is top priority, 75+ horse herd, Western riding style
- **Trail Rides:** 1-2 hr beginner, 3-4 hr advanced trail rides, small group sizes
- **Arena & Roping Lessons:** 30-60 min personalized instruction in arena
- **Breakfast Rides:** Available on Friday mornings June-August





## FLY FISHING

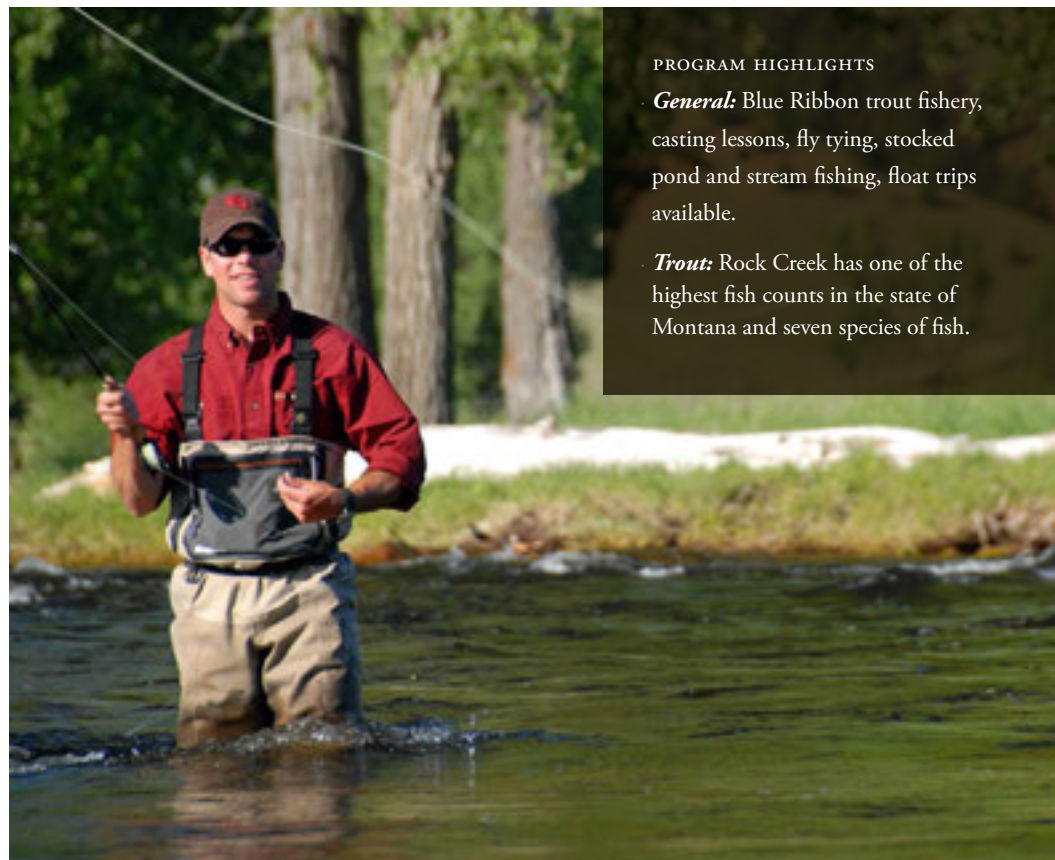
WALK & WADE / LESSONS / FLY TYING / STOCKED PONDS / FLOAT TRIPS

Whether you've dreamed of fly fishing in Montana for years or you've yet to cast for the first time, you will not be disappointed by the opportunities on our namesake Rock Creek.

Four miles of private access and pristine river frontage on this freestone mountain stream boasts seven species of fish: Westslope cutthroat, rainbow, cut-bow,

brown, brookie, bull and the Rocky Mountain whitefish. Rock Creek is famous for its salmonfly hatch starting in late May and lasting into July, as well as additional hatches including mayflies, golden stoneflies and caddis fly.

Our licensed and trained fishing guides are excited to share their professional expertise and personal passion for fishing.



### PROGRAM HIGHLIGHTS

**General:** Blue Ribbon trout fishery, casting lessons, fly tying, stocked pond and stream fishing, float trips available.

**Trout:** Rock Creek has one of the highest fish counts in the state of Montana and seven species of fish.



## TARGET SPORTS

SPORTING CLAYS / TRAP & SKEET / RIFLE & PISTOL RANGES / 3-D ARCHERY

The Ranch at Rock Creek offers an exceptional multi-faceted set of ranges and activities that experts and novices alike find challenging and enjoyable. Our guides train each guest on safety guidelines, proper handling and techniques with all equipment to ensure a safe experience for everyone.

Through private instruction and a controlled environment, guests can develop new abilities while achieving a sense of accomplishment.

Our program is designed to teach skills and safety to first-time shooters while giving experienced marksmen an opportunity to test their abilities.



### PROGRAM HIGHLIGHTS

**General:** Safety is a top priority, four different ranges, courses designed for beginners to experts, competition shooting, reactive targets

**Seasonal Wing Shooting:** Pheasants and chukars, September 1 to November 30, \$40 upland shooting license, additional cost activity



## LITTLE GRIZZLIES KIDS CLUB

OUTDOOR DISCOVERY / COWBOYS & HORSES / NEW SPORTS / ARTS & CRAFTS

The Ranch understands the need to tailor the outdoor experience to the strengths of our youngest explorers, and our Little Grizzlies Kids Club caters to a well-rounded family vacation.

Our kids club introduces children to the frontier West in an exciting and safe way. Our trained staff offer parents a chance to indulge in private time or to adventure at a faster pace. Little Grizzlies Kids Club is a fun, outdoor educational program focus-

ing on Montana's natural environment and Ranch life. Children ages 4 to 12 are welcome to join for both morning and afternoon activities throughout the week. Babysitting is available at an additional cost.

One day, kids might be over at the barn learning about animals; the next day, they could be on the banks of Rock Creek identifying trout. The technology of home will be forgotten once kids connect to nature.



### PROGRAM HIGHLIGHTS

**Rivers & Ponds:** Rock Creek, its ponds and tributaries, aquatic creatures and their importance to The Ranch

**Cowboys & Horses:** Wranglers, horse care, barn safety and the life of a cowboy

**Plants & Rocks:** Discover what grows and thrives in Montana's Rocky Mountains

**Arts & Crafts:** Make something that reflects the season and the spirit of the West

**Ranch Heritage:** The exciting history of Montana, including mining, ranching and pioneering

**New Sports:** Personalized bike riding, ice skating and fishing lessons, to name just a few

PRIVATE PRACTICE

*Consider scheduling a Jeep, hike or trail ride to one of the beautiful hilltops at The Ranch with your private yoga instructor and prepare for a dynamic session under the sun.*





## GRANITE SPA

---

---

### Balance Rocky Mountain recreation with rejuvenating treatments for the mind and body.

---

---

While the majority of your stay is packed with invigorating outdoor adventures, we welcome you to the Granite Spa, a luxurious place for peace and relaxation.

The Granite Spa offers treatments directed at soothing sore muscles and hydrating and nourishing skin. We strive to curate the highest-performing, organic skincare and body products from regional makers, including ranch-inspired

scents from Sage & Cedar in Whitefish, Montana and Colorado's Sanitas Skincare facial formulas.

Our services extend past body work, facials, nail care and makeup to the powerful practice of yoga.

Knowledgeable yoga instructors teach private sixty-minute yoga sessions in secluded indoor settings or on mountaintop vistas. They can tailor their flow to your skill level and

preferences. The Cedar Sauna is also a highlight for spa guests.

---

#### SPA AT A GLANCE

- 4 treatment rooms, 12+ spa treatments, including bodywork, facials and nail care
- All products are chemical free and feature locally sourced organic ingredients when possible.
- Open daily - 9:00am to 6:00pm with Cedar Sauna access



#### PHOTO LEFT: ROCK CREEK RITUAL

*A signature treatment for those who want to pamper themselves, the Rock Creek Ritual begins with a full-body exfoliation, followed by a rinse and moisturizing wrap. Enjoy being cocooned in layers of blankets while the wrap treatment delivers deep hydration to the skin. A second rinse is followed by an oil application, leaving you feeling silky smooth and radiant.*

*A full menu of Granite Spa treatments and services is available online.*

SAMPLE ITINERARY

# A SUMMER WEEK AT THE RANCH

DAY 1



FRIDAY

**AFTERNOON** – *Arrival and Introduction to Ranch Activities*

**2:30PM** – *Lunch*

**3:30PM** – *Sporting Clays*

**5:00PM** – *Social Hour with Cocktails & Hors d'oeuvres in the Great Room*

**7:00PM** – *Chef's Tasting Menu in the Granite Lodge*

DAY 2



SATURDAY

**7:30AM** – *Yoga at Top of the World\**

**8:30AM** – *Breakfast*

**9:30AM** – *Casting Lesson & Fly Fishing*

**12:00PM** – *Lunch*

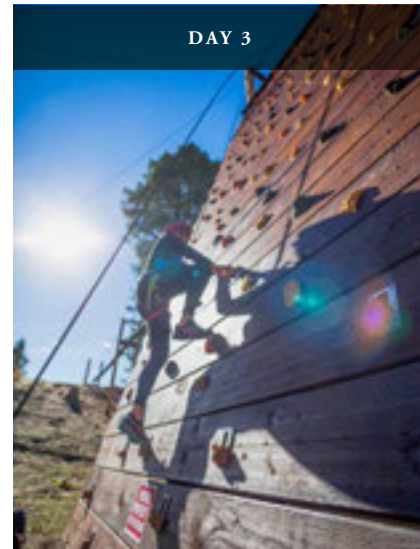
**2:00PM** – *Trail Ride to Sage Brush Flats*

**2:00PM** – *Little Grizzlies Kids Club: Outdoor Discovery*

**5:00PM** – *Swimming in our Outdoor Pool or Hot Tub*

**8:00PM** – *Ranch Night Dinner in the Granite Lodge*

DAY 3



SUNDAY

**9:00AM** – *Breakfast*

**10:00AM** – *Ropes Course Challenges*

**12:00PM** – *Lunch*

**2:00PM** – *Downhill Mountain Biking*

**7:00PM** – *Dutch Oven Dinner Outdoors on the Flagstone*

DAY 4



MONDAY

**9:00AM** – *Breakfast*

**10:00AM** – *Trail Ride Along Rock Creek*

**12:00PM** – *Lunch*

**1:30PM** – *Family Lesson in the Arena*

**4:00PM** – *Independent Wildlife Hike*

**6:30PM** – *Social Hour in the Great Room*

**8:00PM** – *Chef's Tasting Menu in the Granite Lodge*

Our fully customizable activity schedules allow guests to decide how they would like to explore the property and experience Montana. Below is an example of what your visit at The Ranch might look like during the summer months.

---



---

## Each day at The Ranch is a new adventure.

---



---

Guests may sign up for activities or speak with an experienced Ranch guide at the Rod & Gun Club upon arrival or arrange their itinerary in advance.



DAY 5

**TUESDAY**

- 9:00AM – Breakfast
- 10:00AM – Ghost Town Tour & Visit to Historic Philipsburg\*
- 12:00PM – Lunch
- 1:30PM – Fly Fishing on Rock Creek
- 5:00PM – Rodeo at The Ranch
- 6:30PM – Blue Canteen Barbeque



DAY 6

**WEDNESDAY**

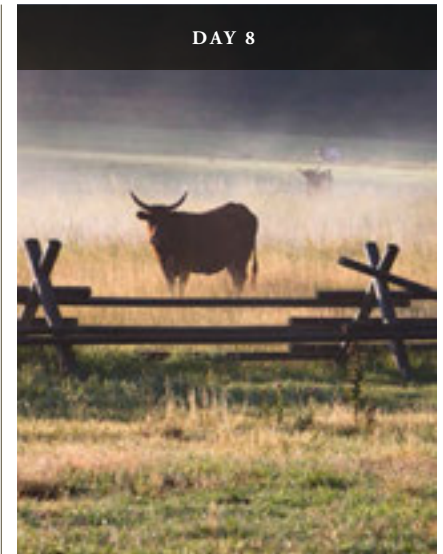
- 9:00AM – Breakfast
- 10:00AM – Trail Ride to Paradise Peak
- 12:00PM – Lunch
- 1:30PM – Pistols (Adults)
- 1:30PM – Little Grizzlies Kids Club: Life at The Ranch/Pony Rides
- 6:00PM – Social Hour in the Great Room
- 7:00PM – Dinner in the Granite Lodge
- 8:00PM – Bowling Tournament in the Silver Dollar Saloon



DAY 7

**THURSDAY**

- 9:00AM – Breakfast
- 9:30AM – Fly Fishing on Rock Creek
- 12:00PM – Lunch
- 2:00PM – Little Grizzlies Kids Club: Arts & Crafts
- 2:30PM – Granite Spa Treatment\*
- 5:00PM – Wells Fargo Stagecoach Ride
- 7:00PM – Chef's Grill on the Flagstone
- 8:30PM – Bonfire and S'mores



DAY 8

**DEPARTURE DAY**

- 9:00AM – Breakfast
- 10:00AM – 3-D Archery
- 12:00PM – Lunch
- 1:30PM – Departure

---

*\*Additional cost activity*

*All guest itineraries are customizable to meet personal preferences, ability levels and needs.*

TESTIMONIAL

“This is a place of extreme magic, a must for anyone who wants luxury, peace and calm with the great outdoors and so many activities you can get lost in time. This is all coupled with amazing service, food and hospitality and a great team who make your stay memorable. An absolute must for anyone wanting to experience the true Montana.”

—ELAINE T., *TripAdvisor Reviewer*

”







WINTER IN MONTANA

## SNOWBOUND

---

---

In Montana, cold weather doesn't mean hibernation. Escape to our winter wonderland for limitless snow sports or make Montana home for the holidays.

---

---



Our winter vacations are an incomparable experience for families, friends and couples. Greet the New Year with new adventures. Cross-country ski and snowshoe through miles of alpine trails, seeking inspiration along frozen paths overlooking glistening vistas.

Fireside refreshments, hot cedar soaking tubs and cozy blankets warm your hands and heart after outdoor adventures. The Ranch at Rock Creek offers over

twenty wintertime activities. Best of all, leave your bulky gear at home. The Rod & Gun Club provides all winter sport gear.

As a founding member of National Geographic Society's Unique Lodges of the World, The Ranch provides an experience where guests of all ages can participate in winter recreational activities to which they would not usually have access.

---

PHOTO LEFT: SKI DISCOVERY

*Downhill skiing is one of our most popular off-ranch winter activities. One repeat guest said, "You can ski more in a day at Discovery than you can in a week at most resorts."*

PHOTO TOP: EAGLE'S PERCH

*This two-story luxury log home is perfect for a family ranch vacation.*



**WINTER AT A GLANCE**

- Reduced winter season rates
- 20 miles of cross-country ski trails
- Special holiday and seasonal celebrations
- Gear, equipment, and guides included for extensive on-property activities
- Discovery Ski Area offers bunny hills, double black diamond runs and groomed cross-country trails.



**ON-PROPERTY SNOW ACTIVITIES**

**SNOWMOBILING**

Crest hills and visit untouched valleys near Rock Creek on a powerful snowmobile. You'll be fitted with helmets, goggles and insulated gear before you take control of a state-of-the-art machine.

**SNOWCAT TOURS**

Climb aboard our vintage Snowcat machine to see the spectacular valley floor and beyond. This four-track snow glider fits a family or group on an afternoon adventure. Our guide packs a picnic and drinks, as well as snowshoes and cross-country skis to reach hidden peaks.

**SLEIGH RIDES**

Couples and families love the ambiance on our historic sleigh rides. Hitched horses pull the sleigh over snowy meadows, while riders sip hot cocoa. The sound of bells delights guests of all ages.

**ICE SKATING & SLEDDING**

Just outside the Granite Lodge, our Bikini Pond converts into an ice skating and hockey pond, complete with a cocoa-stocked warming shed. Hitch a ride on the shuttle to Elk Ridge for some exhilarating sledding. Younger guests enjoy Cottontail Hill, with its slight, but exciting slope.

**SNOWSHOEING & CROSS-COUNTRY SKIING**

Each winter, our extensive hiking trail system transforms into 20+ miles of cross-country ski trails through pine forests and meadows. Those who love to walk can slip on a pair of lightweight snowshoes and explore the trails.

## DOWNHILL SKIING AT DISCOVERY SKI AREA

---

### *National Geographic* has named Philipsburg one of North America's Best Secret Ski Towns.

---

It's easy to see why. Only 35 minutes from The Ranch, Discovery Ski Area boasts the shortest lift lines in Montana. The mountain has three faces and 67 trails, including bunny hills, moguls, groomed trails and double black diamond runs.

Warren Miller filmed part of his 2014 film, *No Turning Back*, at Discovery Ski Area on these expert runs. Guests may enjoy an après ski visit to historic Philipsburg.



#### STAFF INSIGHTS

“I love that Discovery is a locally owned hill. It's not a gigantic corporate mountain with cramped condo developments and insane lift lines. The diverse terrain is perfect for both skiers and boarders. The double black diamonds are on the north facing side of the mountain so the snowpack holds really well throughout the season.”

—PATRICK LITTLE, *Activities Director & Discovery Ski Patroller*

SPECIAL EVENTS AND HOLIDAYS

# SEASONAL CELEBRATIONS

---

## WEEKLY SUMMER RODEOS

The Ranch hosts a summer rodeo every Tuesday evening in the Camp Roosevelt Arena, complete with professional cowboys and rough stock events. Watch cowboys ride a bucking bronco or rope a galloping steer. Cheer on your favorite wranglers as they race around

the barrels. Events such as wheelbarrow races and boot tosses get the audience participating in the fun. After the show, meet the cowboys and cowgirls in the Blue Canteen for a rodeo barbeque. *Private rodeos for events may be scheduled at an additional cost.*



FOURTH OF JULY



SADDLE BRONC RIDING AT OUR WEEKLY RODEO

All elements of our seasonal celebrations, such as barn dances, fireworks, live music, cowboy poetry, and lawn games are part of our all-inclusive experience.

#### MEMORIAL DAY WEEKEND

Kick off the summer during Memorial Day Weekend with all-inclusive outdoor adventures and cowboy culture at The Ranch at Rock Creek. Revel in Chef Drage's ranch dining experiences, live music and dancing under the stars, as well as a Montana tradition—a Memorial Day Weekend Rodeo.

#### FOURTH OF JULY

Celebrate America's birthday in the heart of the West. Festivities include The Ranch at Rock Creek Rodeo, Flagstone lawn games, trick roping, wagon rides, bonfires, live music, dancing and fireworks. Chef Drage will spark up the grill and serve Montana's freshest seasonal bounty and barbeque fare.

#### AUTUMN HARVEST

Mark the change of seasons with a weekend of delectable seasonal cuisine and Western entertainment, including a harvest feast, live music and a Buckle Barn dance. In addition to our limitless outdoor recreational activities, take part in wagon rides, geocaching, a pumpkin scavenger hunt, rodeo games and gourmet feasts highlighting the abundant fall harvest available in Western Montana.

#### THANKSGIVING

Chef Drage and his culinary team invite you to enjoy The Ranch's orchestration of Montana's bountiful harvest. Delight in a feast inspired by the history and bounty of the West. Reconnect in Big Sky Country. Host your family get together in one of our large luxury homes or steal away as a couple to our Trapper Cabin.



MEMORIAL DAY WEEKEND RODEO



AUTUMN HARVEST WEEKEND



## PONDEROSA CHRISTMAS

*Named to celebrate the official Montana state tree, the stately and beautiful Ponderosa Pine, the three-bedroom Ponderosa House (pictured here), is nestled near Bikini Beach Pond, just across from the Granite Lodge.*



#### MAKE MONTANA HOME FOR THE HOLIDAYS

Retreat to 6,600 acres of snow-covered Montana to share our seasonal dining experiences and limitless outdoor winter activities with family and friends. Ring in the New Year by learning a new winter sport. Gather by the crackling fire in your log home after a day of celebrating the season with a winter wonderland of adventures or rejuvenating in the Granite Spa.

Special seasonal activities include wagon and sleigh rides, a visit from Santa and his elves, live music, gingerbread house making, cookie decorating, ornament making, snowman building, a holiday movie marathon and Christmas tree hunting.



**DON'T LEAVE ANYONE HOME  
FOR THE HOLIDAYS**

*We understand how important your  
furry family members are. Pets are  
always welcome at The Ranch. We will  
ensure accommodations are equipped  
with pet bowls and a comfortable  
place to rest sleepy heads.*







TESTIMONIAL

“We were lucky enough to spend Christmas at the ranch. It was our first time and had read all the reviews and had some high expectations. From the moment we were collected from the airport until we were given lunch packs to take away with us on our last day, our expectations were exceeded time and time again.”

—BECK CATTERMOLE, *TripAdvisor Reviewer*





#### CUISINE FOR RANCH LIFE

*Sous Chef Ben Miller, left, and Executive Chef Josh Drage, right, enjoy creating food that reflects the flavor and lifestyle of Montana. Ranch life is about adventures in the outdoors. Our menu is nourishing and healthy for an active ranch lifestyle.*



## OUR DINING PROGRAM

# TASTES OF MONTANA

---

---

When you enjoy a meal here at The Ranch, you get a sense of what is growing in Montana.

---

---

Our kitchen tells a story about Montana stock, wildlife, herb and harvest. With regionally and locally-sourced organic ingredients, Chef Drage's Ranch menus and dining experiences mirror the regional seasonal bounty.

Preparation is equal parts mountain tradition and modern palate, often employing a wood fire grill, a Dutch oven or the full array of a state-of-the-art kitchen.

Ranch style dining captures experiences like horseback riding through grasslands and, later, tasting Montana alfalfa in the grass-fed beef or wildflowers in a Sapphire Mountain honey vinaigrette. Raise your glass to farm and ranch-to-table cuisine with an expertly paired local draught or regional wine. All meals are included and tailored to dietary restrictions and preferences. A children's menu is always available.



PHOTO OPPOSITE PAGE: CHEF'S GRILL ON THE FLAGSTONE

*The weekly Chef's Grill and Sunday Dutch Oven dinners are served outdoors during summer months. These family style dining events complement The Ranch's four to six course nightly dining experience. Carriage and wagon rides are offered during each outdoor dining event.*

PHOTO LEFT: SEASONAL AND LOCAL

*The Ranch's culinary team celebrates local farms and the colorful bounty of the seasons. Montanans harvest both red and golden beets, versatile root vegetables that enhance many dishes during every season of the year.*

## DINING AT THE RANCH

---

### EARLY BIRDS | 6:30AM

Freshly-made pastries, coffee and tea arrive in the Great Room at 6:30am every morning, catering to guests who want to wake up with the sun.

### BREAKFAST | 7:30-10AM

Enjoy hearty breakfast fare daily from 7:30 to 10am in the dining room. Ranch breakfast favorites, like our farm fresh egg scramble and lemon ricotta blueberry pancakes with a side of locally-smoked bacon, give guests a jumpstart on their adventures.

### LUNCH | NOON-2PM

Refuel at lunch, between noon and 2pm in the dining room. Opt for a grilled steak salad, sweet potato sandwich or tomato soup. The ever-changing menu features plenty of choices for all tastes and dietary needs.

### SOCIAL HOUR | 6-9PM

Hors d'oeuvres, craft cocktails, local micro-brews and a selection of wines are available in the Great Room before dinner each night.



### SUMMER MORNINGS

In the warmer months, between the hours of 6:30 and 11am guests enjoy a fireside breakfast in the bright, open-air Blue Canteen located in Camp Roosevelt. The breakfast bar features pastries, granola and yogurt, fresh juices, coffee and tea in a rustic and relaxing environment.

### SUMMER AFTERNOONS

The Blue Canteen does dynamic casual fare during the summer. Between noon and 3pm, start your lunch with freshly-made warm chips and guacamole, then enjoy a grilled wild salmon and kale salad or a bison burger off the grill before heading out on your afternoon adventure.

Return between 3:00 and 6:00pm for a draught beer and honey chili wings with fried green tomatoes.

*The Blue Canteen is open daily June - September from 6:30am until 6:00pm*



## SPECIAL DINNER EVENTS

---

*Monday & Friday*

### **CHEF'S TASTING MENU**

Enjoy the four to eight courses designed as a culinary tour of a Montana harvest, exploring unique plates and wine pairings served in the Granite Lodge.

### **LITTLE GRIZZLIES DINNER**

During the Tasting Menu dinner parents may opt for children to enjoy a special kids-only meal with the Little Grizzlies Kids Club counselors in the Silver Dollar Saloon.

*Tuesday During the Summer*

### **RODEO BARBEQUE**

Snack on watermelon or Flathead cherries and drink brews and sodas while you enjoy the raucous excitement of our Tuesday summer rodeo. Then, join us in the Blue Canteen for the post-show barbeque. Ranch style recipes include barbeque ribs and chicken, beans, corn bread and blueberry cobbler.

*Thursday*

### **CHEF'S GRILL**

Step outside for fresh fare on the Granite Lodge Flagstone. Talk with Chef Drage and Sous Chef Ben Miller as they serve our season's harvest in a combination of healthy, distinctive dishes with grilled flank steak and Alaskan salmon in an outdoor setting.

*Saturday*

### **RANCH NIGHT**

Enjoy comfort food with a gourmet twist each Saturday. Refuel with organic beef meatloaf, cast-iron chicken and a brownie sundae for dessert. This dining experience is occasionally hosted in the beautiful new Buckle Barn.

*Sunday*

### **DUTCH OVEN DINNER**

Dutch Oven dinners are on the Flagstone or in the dining room in a style Chef Drage has been perfecting since his childhood in Alaska. Dutch ovens are filled with braised pork shoulder or a slow-cooked leg of lamb and cooked over a wood fire. Everything from potatoes gratin to seafood cioppino to apple crisp is cooked and served in this traditional Western way.



## PLACES AND SPACES

---

---

Our dining program is as versatile as the landscape from which our ingredients come.

---

---



Our culinary experiences change with the season. The Granite Lodge is our main dining area. During the warm months, the Blue Canteen is our main lunch destination after activities. Summer ensures that outdoor dining takes center stage on the Flagstone complete with twice-weekly stagecoach rides.

Celebrations, such as Autumn Harvest Weekend and New Year's Eve, are often paired with dancing in the Great Hall of Buckle Barn.

If you are considering traveling as a group, Chef Drage applies his extensive experience to thoughtfully create customized menus for weddings and other grand

celebrations, such as family reunions and corporate retreats.

We want guests to feel comfortable and strive to accommodate all dietary needs and requests.

A children's menu is available at all of our dining locations and events.



---

PHOTO TOP: BUCKLE BARN

*Constructed in 2014, this is our premier event space complete with outdoor patio, conference room and spacious great hall. It is located on the east side of Rock Creek.*

PHOTO RIGHT: GREAT ROOM

*Inside the Granite Lodge, the Great Room, with its grand decor and game tables, plays host to social hour every night at 6pm.*

## PRIVATE EVENTS

*All of our unique dining venues may also be reserved for private events. Inquire to learn how to create an ideal culinary experience for your retreat, wedding or reunion. Additional charges may apply.*





MAIN DINING VENUE  
**GRANITE LODGE**

---

---

A warm and relaxed gathering and dining venue, the Granite Lodge hosts breakfast, lunch and dinner daily, featuring evening multi-course and tasting menus paired with regional wines. Arrive at 6pm in the Great Room to enjoy artisan cocktails and gourmet hors d'oeuvres before you step in to dine by the fire and share tales of your day under the Big Sky.

GREAT ROOM  
CAPACITY: 90  
SIZE: 1,600 sq. ft.  
OPEN: Year Round

DINING ROOM  
CAPACITY: 90  
SIZE: 1,700 sq. ft.  
OPEN: Year Round







## SUMMER DINING VENUE BLUE CANTEEN

---

The epitome of ranch style dining in the open-air, the Blue Canteen is a hybrid cabin and canvas tent, turned breakfast and lunch nook, made cozy by a wood-burning stove. Enjoy casual cuisine, such as a grilled chicken and kale pesto sandwich or pulled pork with potato fries and an organic green salad for lunch or coffee with pastries and granola for breakfast on-the-go.

*The Blue Canteen is open daily  
6:30am - 6:00pm during the  
summer. May be booked for private  
events May-October*

**CAPACITY:** 125  
**SIZE:** 1,400 sq. ft.  
**OPEN:** June-September





## MAIN EVENT SPACE BUCKLE BARN

---

The spacious Great Hall, surrounding flagstone, manicured lawn, and tech savvy library make the Buckle Barn our most versatile year-round venue. Our event barn features a wood fire grill, bar area, and large projection screen in the Great Hall. Seasonal celebrations and special events are hosted in this warm and traditional Montana setting, often followed by live music and dancing on the circular-sawn fir floors.

**GREAT HALL**  
CAPACITY: 125  
SIZE: 5,000 sq. ft.  
OPEN: Year Round

**THE LIBRARY**  
CAPACITY: 30  
SIZE: 625 sq. ft.  
OPEN: Year Round



GREEN SPACE AND PATIO



#### VERSATILE SPACE

*The Library is a great venue for brunches, meetings or small receptions. This space works well in combination with the Great Hall for a bar/lounge area or a kids dining room during a reception.*



#### GAMES ON THE GREEN

*The lawn outside the Buckle Barn is perfect for games and social events.*



NIGHTLY ENTERTAINMENT  
SILVER DOLLAR SALOON

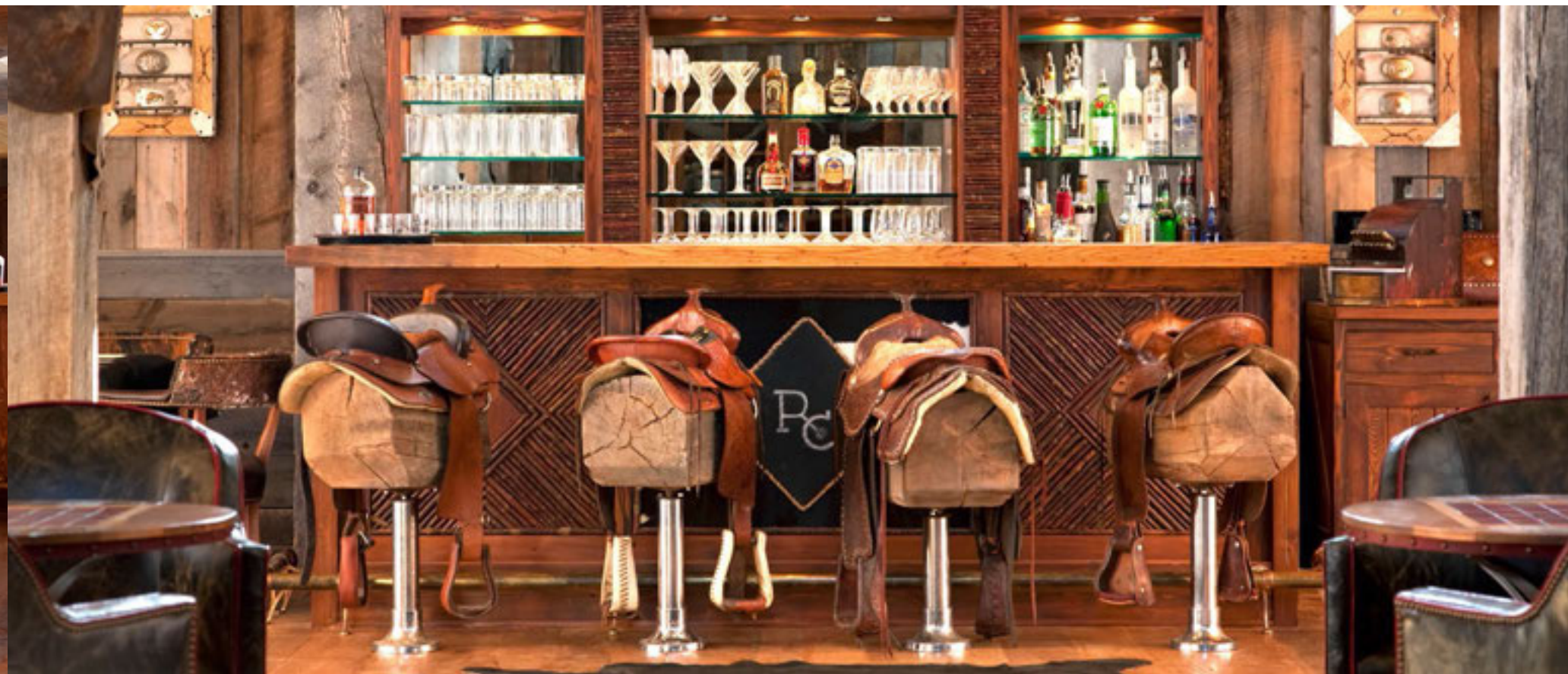
---

Located near the Granite Lodge, the Silver Dollar Saloon opens its doors nightly for merriment and activities for all ages. In addition to evening entertainment, the Silver Dollar Saloon can be reserved for presentations and meetings. The 14-foot screen and sound system in the private theatre are ideal for presentations. The large floor space is flexible for various seating styles or even a group yoga studio.

THE SALOON INCLUDES

- *Four-lane bowling alley with computerized scoring*
  - *Private movie theatre with 14-foot HD screen*
  - *Billiards*
  - *Karaoke*
  - *Shuffleboard*
  - *Table tennis*
  - *Card and game tables*
  - *Darts*
  - *Board games*
- 

**CAPACITY:** 100  
**SIZE:** 1,200 sq. ft.  
**OPEN:** Year Round







## SUMMER CELEBRATIONS

### OUTDOOR PARTIES

---

---

The Flagstone is our main outdoor party space. This slate patio sits at the center of the Granite Lodge courtyard by the Silver Dollar Saloon. A wood fire grill and serving bar make it ideal for outdoor dining and socializing. Dinner is hosted here twice a week during the summer.

The manicured lawns next to Camp Roosevelt serve as the venue for one of our favorite events, the hoedown. Although rustic in name, don't underestimate the raucous good time provided by local musicians, dancing and a pig roast dinner served outdoors.

#### ROD & GUN LAWN

CAPACITY: 125

SIZE: 9,000 sq. ft.

OPEN: May-October

#### THE FLAGSTONE

CAPACITY: 125

SIZE: 4,000 sq. ft.

OPEN: May-October





#### PRIVATE OCCASIONS

### DESTINATION PICNICS

---

For private events or special occasions, guests may arrange to travel by horse-drawn wagon to enjoy a picnic at Piney Pond or Bikini Beach. A luncheon at an accommodation can be designed for bridal parties, families and corporate teams.

#### WEDDING CHAMPAGNE TOASTS

Savor an intimate moment and premium champagne from one of our signature vistas. Bring your photographer and add a photo session framed by the Pintler and Sapphire Mountain ranges. *Limited to 30 people.*

#### DESTINATION PICNICS

**CAPACITY:** *Contingent on location*

**LOCATION:** *Bikini Beach, Piney Pond, or any of our private homes*

**AVAILABLE:** *May-October*







DESTINATION EVENTS

# RECONNECT OUTDOORS

---

---

Planning events together has never been easier with our all-inclusive structure and on-site event coordinators.

---

---

Our event coordinators and staff produce private events in a stunning and stress-free way that enhances your adventures, rather than interrupting them.

A Montana ranch is an ideal place for families, wedding parties, and corporate groups to gather and reconnect. Out of the buzz of the city, the natural environment encourages guests to settle into a relaxed pace where almost anything is possible.

Instead of tackling an extensive family reunion itinerary, let us seamlessly incorporate your group into our all-inclusive ranch experiences, like summer rodeos, horseback riding and dinner served straight from a wood fire grill. Sprinkle a few private events, like welcome receptions, destination picnics or dinners, into the mix, and your Ranch at Rock Creek vacation will become an unforgettable chapter in your family's history.



PHOTO TOP: TEAM BUILDING  
*Our ropes course promotes cooperation and communication while experiencing a new adventure together.*

PHOTO RIGHT: REACH THE TOP  
*Friends, families and colleagues make memories together as they explore the stunning Northern Rockies.*



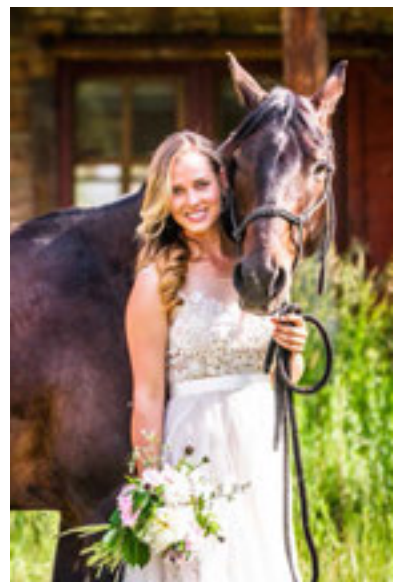
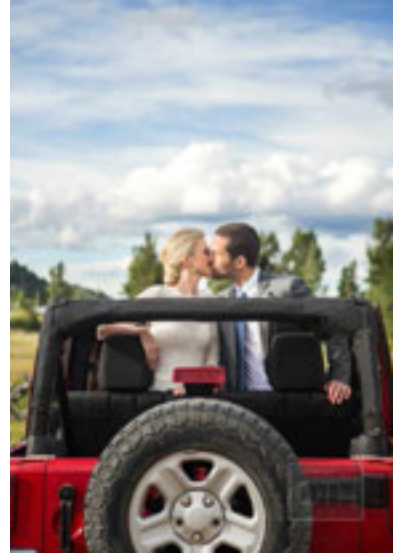




## WEDDINGS AT THE RANCH

---

As one of the world's most unique wedding venues, we fuse a historic ranch, barn wedding and luxury affair into one unparalleled experience. The Ranch hosts all-inclusive destination weddings that include accommodations, meals, activities and breathtaking custom events for up to 125 guests. Although the location is private, we have everything a traveler could need, from our Granite Spa to inventive dining to a comprehensive variety of activities and amenities. With everything in one place and 10 square miles to explore, two separate families are destined to form a bond that will last a lifetime.



SAMPLE ITINERARY

# WEDDING WEEKEND AT THE RANCH



THURSDAY

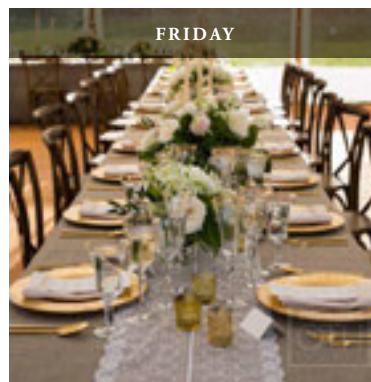
ARRIVAL DAY

2:00PM - Arrive at The Ranch  
Wedding Party and Guests Sign Up For  
Activities

3:00PM - Welcome Reception on  
Granite Lodge Flagstone, Including  
Signature Cocktails, Hors d'oeuvres,  
Wagon Rides and Roping Demonstra-  
tions

7:00PM - Chef's Grill on the Flagstone

9:00PM - Evening Revelry in Silver  
Dollar Saloon: Darts and Billiards  
Tournament and S'mores Roasting on  
the Bonfire



FRIDAY

REHEARSAL DINNER

7:30-10:00AM - Breakfast

10:00AM - Bride & Groom Horseback  
Ride, Guest Activities

12:00PM - Lunch

2:00PM - Wedding Party Ropes  
Course Challenge, Guest Activities

5:00PM - Ceremony Rehearsal

6:00PM - Rehearsal Dinner:  
Hoedown on the Rod & Gun Lawn  
with a Pig Roast and Barbeque\*

— or —

Private Family Dinner in Buckle Barn  
while Guests Dine in Granite Lodge  
Dining Room\*

8:00PM - Bowling and Karaoke in  
Silver Dollar Saloon



SATURDAY

CEREMONY & RECEPTION

7:30AM - Breakfast

10:00AM - Guest Activities

12:30PM - Lunch

12:00- 3:30PM Granite Spa  
Reserved For Bridal Party

1:30-3:30PM - Guests Bike or Hike  
on Trails

1:30PM-4:00PM - Wedding Party  
Photography Sessions

4:30PM - Processional to Ceremony  
Location

5:30PM - Marriage Ceremony in a  
Birch Grove, Ride in Stagecoach

6:30PM - Top of the World Photos and  
Champagne Toast\*

6:30PM - Signature Cocktails and Hors  
d'oeuvres on Buckle Barn Lawn

8:00PM - Reception in Buckle Barn,  
Live Music and Dancing\*



SUNDAY

DEPARTURE

9:00AM-NOON - Farewell Brunch at  
Blue Canteen\*

ALL DAY - Guest Departure

**Optional:** Bride and Groom stay an extra night  
in the secluded Trapper Cabin.

\*Set-up fees are associated with these private  
events.



## CORPORATE RETREATS & INCENTIVES

---

Trade your boardroom for thousands of acres of Montana ranch land and wilderness, where inspiration and relaxation work in tandem. Our all-inclusive rate lets guests reap their hard-earned rewards. Hosts and planners appreciate the effortlessness of working with us.

Meetings, accommodations, dining, activities, gear, guides, on-Ranch transportation and evening entertainment are in one place for one price.

Our activities program encourages personal growth in sports like mountain biking and fly fishing, but certain activities, like the ropes course and geocaching, are designed for team building and problem solving.

Add corporate functions and hospitality into the schedule in one of our many venues—with our event staff managing all the details.

SAMPLE ITINERARY

# CORPORATE RETREAT AT THE RANCH



DAY ONE

ARRIVAL DAY

AFTERNOON - *Arrival*

2:00PM - *Lunch*

3:00PM - *Casting Lesson and Fly Fishing on Bikini Beach or Granite Spa Treatment\**

5:00PM - *Relax in Accommodation or Communicate with the Office on Complimentary Wi-Fi.*

7:00PM - *Ranch Style Welcome Dinner*

9:00PM - *Evening Revelry in Silver Dollar Saloon.*



DAY TWO

MORNING MEETING

9:00AM-12:00PM - *Meeting in Buckle Barn Library with Breakfast Buffet\**

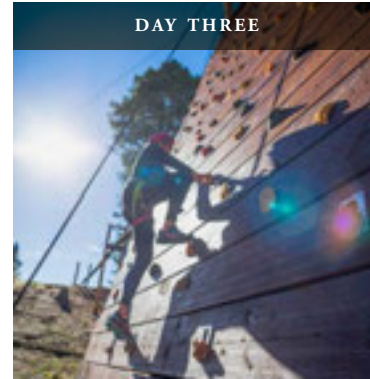
12:00PM - *Lunch*

2:00PM - *Horseback Trail Ride Along Rock Creek or Pistol Shooting*

6:00PM - *Social Hour with Cocktails & Hors d'oeuvres in Great Room*

7:00PM - *Chef's Tasting Menu in Granite Lodge Dining Room*

9:00PM - *Bowling Tournament and Karaoke in Silver Dollar Saloon*



DAY THREE

TEAM COMPETITIONS

7:00AM - *Sunrise Hike*

9:00AM - *Breakfast in Granite Lodge*

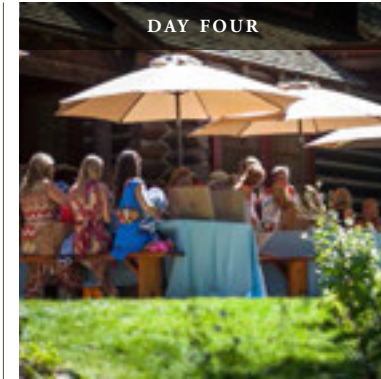
10:00AM - *Mountain Biking Expedition or Sporting Clays*

12:00PM - *Lunch*

2:00PM - *Ropes Course and Climbing Wall Competition*

7:00PM - *Dutch Oven Dinner in Buckle Barn\**

9:00PM - *Bowling Tournament in Silver Dollar Saloon and Smores Toasting over a Bonfire*



DAY FOUR

DEPARTURE

7:30-9:00AM - *Breakfast in Granite Lodge Dining Room*

10:00AM - *Geocaching with Custom Caches and Grand Prize*

ALL DAY - *Departures*

DESIGN YOUR ADVENTURE

Several inspiring corporate retreat ideas and itineraries are available and can be customized by our team to meet your needs and group sizes.

\*Set-up fees are associated with these private events.

OUR GIFT SHOP

# THE MERCANTILE

---

---

We specialize in local artisan goods and high quality outdoor gear.

---

---

Inside the Mercantile you will find basic sundries and travel essentials; men's, women's and children's clothing; kitchen and home goods; Rock Creek signature wear; organic spa products and local artisan goods.

All clothing and gear is high quality, featuring brands like Lucchese, Ariat, Patagonia, Joe's Jeans, Filson and Pendleton. You can find regional

keepsakes, such as local honey from Hall, Montana, hand-crafted leather bags from Missoula, and jewelry from Philipsburg. Products from the Granite Spa are also available in the Mercantile. We endeavor to curate the highest-performing, organic skincare and body products from regional makers. We strive to support Montana businesses.







**RANCH FACT**

*In the first hundred years of Montana's history, ranchers, cowboys and miners had only one place to go for dry goods—the Mercantile. A Western “Merc” was a general store, part refuelling station, part department store and part tailor. The tradition lives on, and The Ranch at Rock Creek's Mercantile is designed to be a Montana trade hub, stocking local artisans and exceptional outdoor brands.*

PLANNING YOUR TRIP

# MONTANA PACKING IDEAS

There is no dress code on The Ranch. Common dinner attire includes jeans, boots and button down shirts. Comfortable and durable clothing is recommended for activities. The Rod & Gun Club has a selection of hiking boots, cowboy boots, rain gear and outer wear for all guests to borrow. The Mercantile and Rod & Gun Club have a selection of outdoor apparel and accessories for sale.

## SUMMER-SEASON SUGGESTIONS

---



BRANDS: Patagonia, Joe's Jeans, Shady Brady, Merrell, Smith Optics, Rainbow Sandals, Bandit Brand, Alba Botanica



## MID-SEASON SUGGESTIONS

---

Changing autumn and early spring weather conditions call for a range of layers. An outer layer is definitely recommended for morning frosts and evening chills. Scarves and gloves provide just enough warmth while out on activities. Durable boots are strongly encouraged for exploring The Ranch.

BRANDS: Patagonia, Ray Ban, Filson, Keen, Ralph Lauren, Montana Silversmiths, Ariat, Joe's Jeans, SSG Gloves

## WINTER-SEASON SUGGESTIONS

---

Layering is crucial for retaining warmth and breathability during snow sports. The Rod & Gun Club has a selection of cold-weather gear including hats, gloves and waterproof shells. All downhill ski equipment is available to rent at Discovery Ski Area, however bringing your own goggles is recommended.



BRANDS: Patagonia, Smith Optics, J.Crew, Filson, Sorel

CHOOSING A SEASON

# WHEN TO VISIT



SPRING | APRIL-MAY

Around April, the green grasses emerge. By June, meadows of wild flowers are in full blossom. Cool mornings give way to beautiful temperate days. Spot wildlife and their babies before they travel to higher elevations to escape hot summer months.

The weather can be unpredictable but magnificent. Snowmelt creates strong stream currents and raised water levels.

### SEASON HIGHLIGHTS

- Hatches
- Wildlife viewing
- Wildflower bloom
- Green grass and spring run-off
- Memorial Day Weekend
- Ideal for: Couples, Corporate Groups, Weddings

**APRIL** - H: 52° | L: 26°

**MAY** - H: 61° | L: 24°



SUMMER | JUNE-AUGUST

July and August are generally our busiest months. Summer is the most popular time for family vacations. July is our hottest month. The days are dry and sunny, cooling off in the evening. Our northern latitude means the last light doesn't disappear until around 10:30pm during the peak of summer.

### SEASON HIGHLIGHTS

- Rodeos
- Dry, sunny days
- Long daylight
- July 4th Celebration
- Peak traveling season
- Ideal for: Children, Family Reunions, Couples

**JUNE** - H: 70° | L: 41°

**JULY** - H: 81° | L: 46°

**AUG** - H: 80° | L: 44°



AUTUMN | SEPTEMBER-NOVEMBER

Fall is a local favorite, especially for anglers and wildlife enthusiasts. Elk can be heard bugling during their breeding season in September. Leaves show their brilliant color from mid-September through early November.

Crisp warm days can be followed by occasional frosted nights. This is the best time for spotting moose who enjoy the cooler air along Rock Creek.

#### SEASON HIGHLIGHTS

- Elk breeding season
- Cool nights, warm days
- Cottonwood and aspen leaves
- Autumn Harvest Weekend
- Thanksgiving
- Ideal for: Couples, Corporate Groups, Weddings

**SEPT** - H: 68° | L: 36°

**OCT** - H: 55° | L: 27°

**NOV** - H: 43° | L: 16°



WINTER | DECEMBER-MARCH

Winter brings serenity and relaxation. Fluffy snow provides active sport pursuits during the day and a quiet and cozy atmosphere for relaxation in the evening. Western Montana receives more snow fall than other parts of the state, creating stunning snow-capped peaks. Winter activities offer endless opportunities to enjoy the pristine white scenery.

#### SEASON HIGHLIGHTS

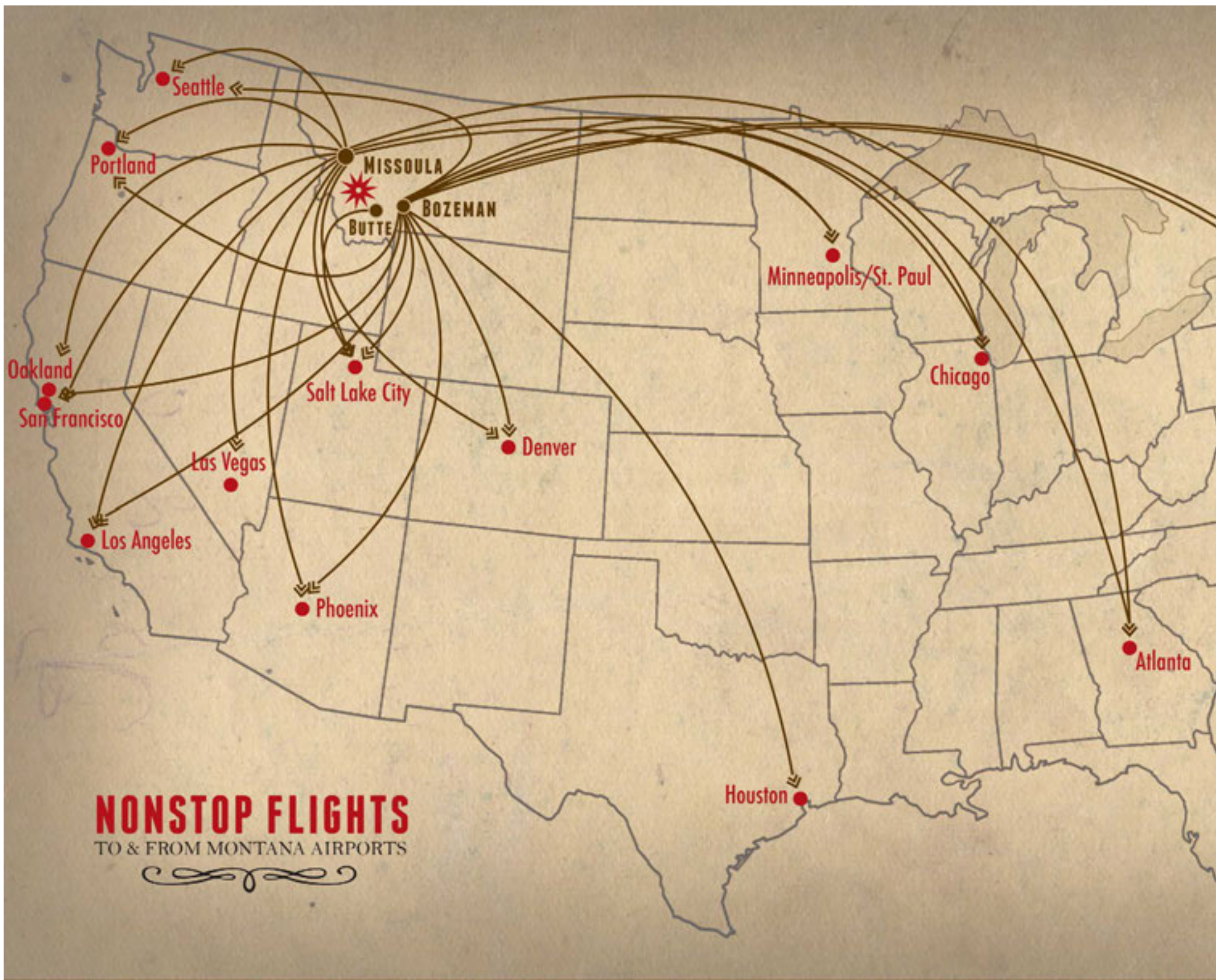
- Ski season
- Sleigh rides
- More snowfall in Western Montana than any other part of the state.
- Holiday celebrations
- Reduced rates
- Ideal for: Couples, Families

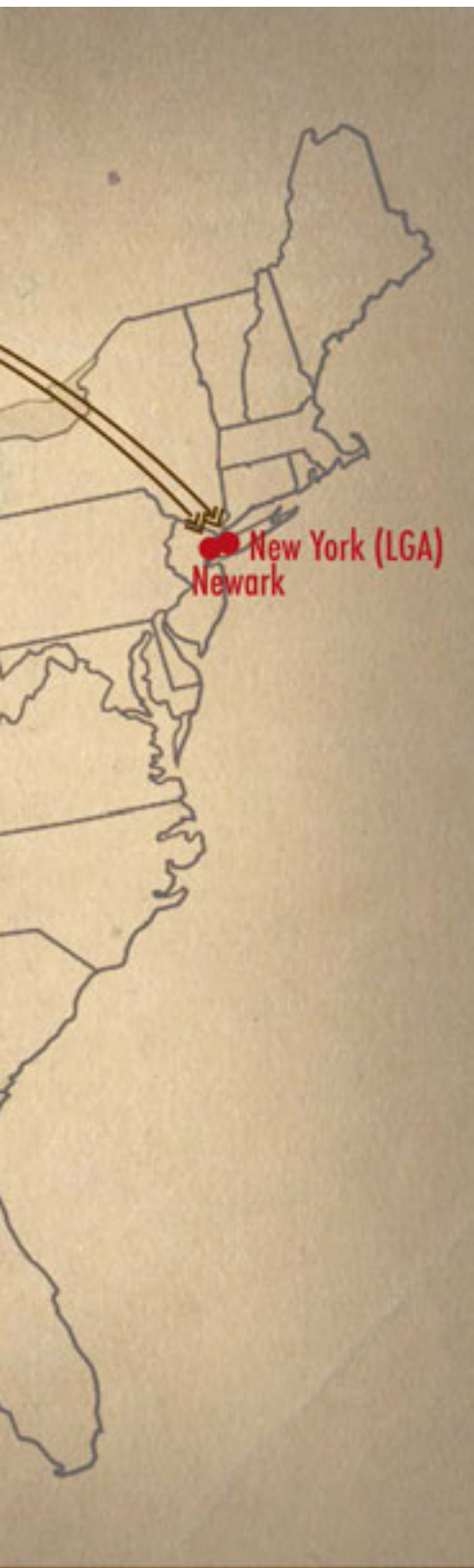
**DEC** - H: 32° | L: 5°

**JAN** - H: 32° | L: 7°

**FEB** - H: 35° | L: 9°

**MAR** - H: 44° | L: 19°





## PLANNING YOUR TRIP

# FLIGHTS AND TRAVEL

A private Ranch vehicle and driver are available to provide round-trip guest ground transportation from the airport to our location at an additional cost. Maximum capacity per car is seven guests. Water and snacks are available for the drive. A luggage trailer is available at no additional cost.

*Call our Front Desk at 1-877-786-1545 with your transportation inquiries.*

### COMMERCIAL AIR TRAVEL

#### MISSOULA INTERNATIONAL

DISTANCE FROM RANCH: 1.5 HRS

Service to ten non-stop destinations and connections to thousands worldwide.

#### BUTTE BERT MOONEY

DISTANCE FROM RANCH: 1.25 HRS

Delta/Skywest offers two non-stop flights to Salt Lake City daily.

#### HELENA REGIONAL

DISTANCE FROM RANCH: 2 HRS

Wide range of connections including select non-stop Delta flights.

#### BOZEMAN-YELLOWSTONE INTERNATIONAL

DISTANCE FROM RANCH: 2.5 HRS

Wide range of connections. Direct and seasonal flights from Atlanta, Chicago, Houston, Los Angeles, New York and San Francisco.

### PRIVATE AIR TRAVEL

*All commercial airports have private travel options as well. The most popular location for private air travel is Butte.*

#### BOWMAN AIR FIELD - ANACONDA

DISTANCE FROM RANCH: 45 MIN

### HELICOPTER TRAVEL

DISTANCE FROM RANCH: VARIES

Helicopter travel between The Ranch and regional locations can be arranged through The Ranch's transportation partners.

#### RIDDICK FIELD - PHILIPSBURG

DISTANCE FROM RANCH: 25 MIN

## FREQUENTLY ASKED QUESTIONS

# GENERAL INFORMATION

### HOW LONG TO STAY

We encourage guests to stay at The Ranch for a minimum of five to seven nights in order to take advantage of all the activities and dining experiences. At booking, guests are required to confirm a four-night minimum stay, unless noted by a Ranch reservations specialist. During the summer months and seasonal celebrations, such as the Fourth of July, Christmas and New Year's Eve, we host a weekly itinerary of events. Staying a full week ensures that you will be able to participate in all of these activities.

### CELL COVERAGE & WIFI

Verizon Wireless customers have the best service at most locations at The Ranch. Wireless Internet is available in all accommodations and buildings throughout The Ranch. Domestic and international calls are included in nightly rates.

### FISHING & WING SHOOTING STATE LICENSES

Montana law requires that our guests purchase the licenses to fish and hunt. Our Rod & Gun Club staff will facilitate your purchase when you book your stay and plan your activities. Children age 14 and under do not require a license to fish.

**Non-Resident Fishing License Fee:** 2-day/\$25 | 4-day/\$40 | 10-day/\$53.50  
**Non-Resident Wing Shooting License:** 3-day shooting preserve upland bird hunting license \$40

### PET POLICY

We are a pet-friendly hotel. Well-mannered, people-friendly dogs will enjoy the endless trails, dips in the river and fresh mountain air. The pet rate is \$50 per pet, per night. We will ensure accommodations are equipped with pet bowls, plastic bags for clean-up and a comfortable place to rest sleepy heads. Leashes may be encouraged in outdoor common areas. Please be aware of wildlife when bringing pets to The Ranch.

### SHIPPING LUGGAGE

Guests may pre-ship luggage to The Ranch by addressing it to the following address:

*Guest Name*  
*The Ranch at Rock Creek*  
*Attn: Reservations*  
*79 Carriage House Lane*  
*Philipsburg, MT 59858*

Packages may be shipped via FedEx, FedEx Ground, UPS, or USPS. You should allow up to five business days for standard shipping options. Please notify our reservations team that you are pre-shipping so that we may have your luggage placed in the appropriate accommodation prior to your arrival.

### GETTING AROUND

Bicycles are provided for all guests during their stay. Mountain bikes, cruisers, and children's bikes (and training wheels) are available. Walking and biking are the most common ways to get around the property, as we prefer to keep traffic to a minimum to allow for a serene and safe environment. Guests staying in Trapper Cabin are provided with a Jeep or an EZ-GO to use on property or offered shuttle service. We are happy to offer car shuttle services throughout the property by request.



### DUDE RANCHES VS. THE RANCH AT ROCK CREEK

The Ranch at Rock Creek is inspired by dude ranch vacations that allowed people to experience an authentic cowboy life in the West. However, instead of simply offering typical dude ranch activities, we illuminate historic and modern Montana pursuits, while providing luxury travel amenities, world-class cuisine, supervised children's activities, a full-service spa and private yoga classes. Our authentic homestead is located on ranch land that is also home to moose, elk, deer and big horn sheep, and offers both views of and access to America's National Forest and wilderness areas.

Our activities program has extensive equestrian and rodeo opportunities, like trail riding, arena events and roping. Recreation on our guest ranch also includes dozens of other year-round activities, such as hiking, mountain biking, pistol shooting, cross-country skiing, ice skating, archery, ropes course and zip lines, snowmobiling and some of the world's best trout fly fishing. With guides and gear always provided, being a versatile luxury guest ranch allows us to appeal to travelers of all ages with varying interests and levels of expertise.







THE RANCH AT ROCK CREEK

79 CARRIAGE HOUSE LANE | PHILIPSBURG, MONTANA 59858 | 877.786.1545 | WELCOME@THERANCHATROCKCREEK.COM

[www.TheRanchAtRockCreek.com](http://www.TheRanchAtRockCreek.com)

